



BRB Color lock

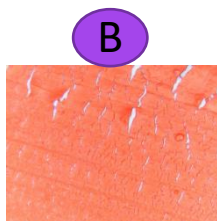
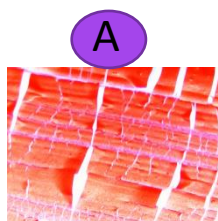
BRB Color lock: Isododecane (and) Trimethylsiloxysilicate (and) Dimethicone

BRB Color lock is a new film former based on the established silicone MQ resin technology (25%) in a unique formulation to improve the flexibility of the film.

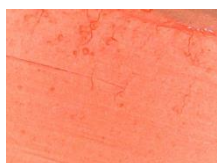
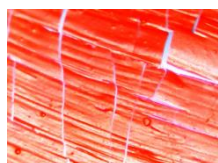
BRB Color Lock has been specially designed to formulate in a wide range of color cosmetic application such as lipstick, mascara, eye liner, eye shadow, powders or foundation.



After stretching 1cm, 2cm and 3 cm, results showed micro cracking formed on Color lock formula fully recovers when extension is removed.



Severe cracking is observed after 3 cm stretch on sample A versus micro cracks on sample B.



No cracking seen on sample B after stretching. Cracks remain after extension on A.

Sample A
Benchmark (50% MQ Resin dilution), 35% into the lipcolor

Sample B
BRB Color lock, 35% into the lipcolor

- X1000 NB Photographs
- Surface: latex band
- Tests performed by our partner Azelis

BRB International
Branskamp 12 6014 CB Ittervoort
www.brb-international.com

Higher flexible film, preventing cracking effect

BRB Color lock will provide you:

- High flexible film
- Uniform coverage
- Long lasting color fixation
- Dry feeling reduction
- Cracking effect prevention

BRB Color lock can be used in:

- Make-up foundations
- Eye mascaras
- Eyeliners and pencils
- Powders
- Lip colors



Visible more uniform coverage of BRB Color lock (right) after 8h skin wear versus Benchmark of MQ resin dilution (left). No cracking or drying effect is observed with BRB Color lock.